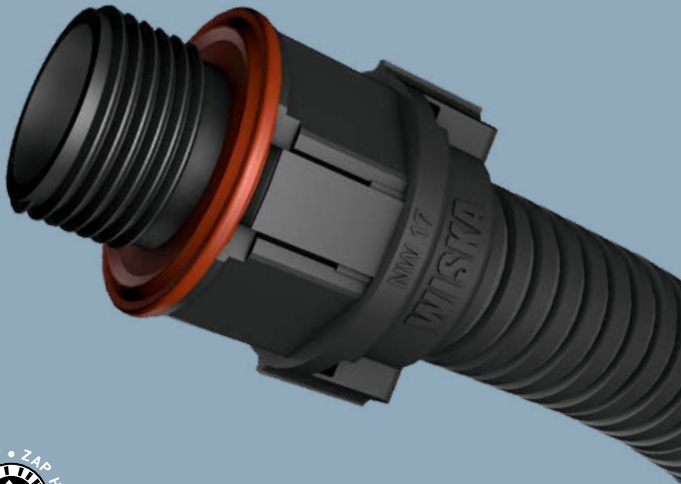


BRACE
by WISKA

WISKA ®
make power smile



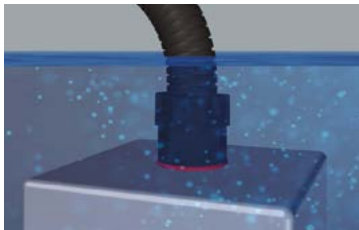
BraceFITTING
IP68 conduit protection for extreme conditions



Easy to use

The unique clasp system for fast opening and closing with one simple tool.

Key features



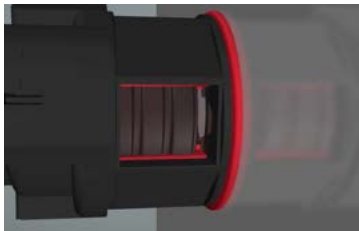
High protection as standard:

All variants of the non-metallic BraceFITTING offer IP68 protection.



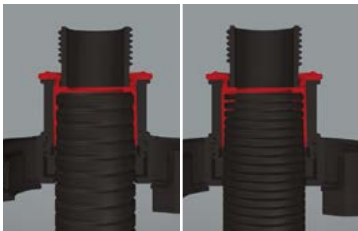
Strain resilience:

Integrated strain relief.



Twice the security:

The directly injected O-ring ensures secure installation and perfect sealing properties.



Time saving:

One-piece construction that fits all.





Fitting options



BraceFITTING



BraceFITTING with metal connecting thread (swivel)



BraceFITTING with 45° angle



BraceFITTING with 90° angle



BraceFITTING with standard cable gland (swivel)



BraceFITTING with cable gland for EMC protection (swivel)



BraceFITTING with VentGLAND®



BraceFITTING Adaptor






BraceFITTING Y-Connector



BraceFITTING T-Connector

Technical data



Protection class	IP68
Temperature range	-40 °C - 100 °C
Material Fitting	Polyamide UL94 - V0, Gasket: TPU
Sizes	M12, M16, M20, M25, M32, M40, M50 & M63
Colours	  

BraceFITTING is used in these industries



Rail Industry



Automation



Shipbuilding



Wind Industry



Machine &
Plant Engineering



Chemical
Industry



Electrical
Installation

This leaflet is AR enabled.



Download the
free Zappar App.



Scan the target to
unlock the content



WISKA Hoppmann GmbH

Kisdorfer Weg 28
24568 Kaltenkirchen
Germany

contact@wiska.de
www.wiska.com

BraceFITTING 03/2020