

Microwave Movement Sensor

This product is fitted with a microwave movement sensor. Please see below detailed operating instructions.

Technical Specifications:

Operating voltage	220 ~ 240V AC 50/60Hz	
Rated load	400W (Capacitive load) 800W (Resistive load)	
Stand-by power	≤0.5W	
Sensitivity	Ceiling mounted height: 3m	100% / 75% / 50% / 25% / 10%
	Ceiling mounted height: 6m*	100% / 75% / 50%
	Wall mounted height: 2m	100% / 75% / 50% / 25% / 10%
Hold-time	5s / 30s / 90s / 3min / 20min / 30min	
Daylight sensor	2Lux / 10Lux / 25Lux / 50Lux / Disable	
Microwave frequency	5.8 GHz ±75MHz	
Transmitting power	1mW Max.	
Detection range	Ceiling mounted height: 3m	3- 6m (radius)
	Wall mounted height: 1.5-2m	12-15m
Detection angle	360° (Ceiling) / 120° (Wall)	
Working temperature	-20°C ~ 60°C	


*50%, 75%, 100% detection sensitivity is workable when installed at 6m mounting height. Only 10%, 25% sensitivity is not able to detect motion signal.

Settings:

1. Sensitivity

Sensitivity can be adjusted by selecting the combination on the DIP switches for different applications.

I – 100%
II – 75%
III – 50%
IV – 25%
V – 10%




	1	2	3	
I	●	●	●	100%
II	○	●	●	75%
III	●	○	●	50%
IV	○	○	●	25%
V	○	○	○	10%

2. Hold-time

Hold-time refers to the time period that the light remains 100% on if no more movement is detected.

I – 5s
II – 30s
III – 90s
IV – 3min
V – 20min
VI – 30min




	4	5	6	
I	●	●	●	5s
II	○	●	●	30s
III	●	○	●	90s
IV	○	○	●	3min
V	●	●	○	20min
VI	○	○	○	30min

3. Daylight sensor

Different daylight threshold can be preset on DIP switches. Light will always turn on upon movement if daylight sensor is disabled.

I – 2Lux
II – 10Lux
III – 25Lux
IV – 50Lux
V – Disable



	7	8	9	
I	●	●	●	2Lux
II	●	●	○	10Lux
III	○	●	○	25Lux
IV	●	○	○	50Lux
V	○	○	○	Disable*

*Disable means the daylight sensor does not work. The sensor will turn on light once motion is detected regardless of ambient light level.

Trouble shooting:

Malfunction	Cause	Remedy
The light will not come on	Incorrect light-control setting selected	Adjust daylight threshold setting
	Faulty lamp	Replace lamp
	No power supply	Check power to sensor
The lamp is always on	Continuous movement in the detection zone	Check detection area setting
The lamp is on without any identifiable movement	The sensor is not mounted for reliably detecting movement	Securely mount enclosure
	Movement occurred, but not identified by the sensor (Movement behind wall, movement of small object in immediate lamp vicinity etc.)	1. Reduce sensitivity. 2. Check the movement behind walls to avoid facilities such as water pipe, fan, which may mis-trigger the sensor.
The lamp will not work despite movement	Rapid movements are being suppressed to minimize malfunctioning or the detection radius is too small.	Check detection area setting

Care and Safety

We recommend cleaning with a soft dry cloth. Do not use solvents or abrasive cleaners as these could damage the finish.
For your safety, always switch off the power supply before cleaning.

For further information, please visit <https://www.lighting-info.co.uk/95542>

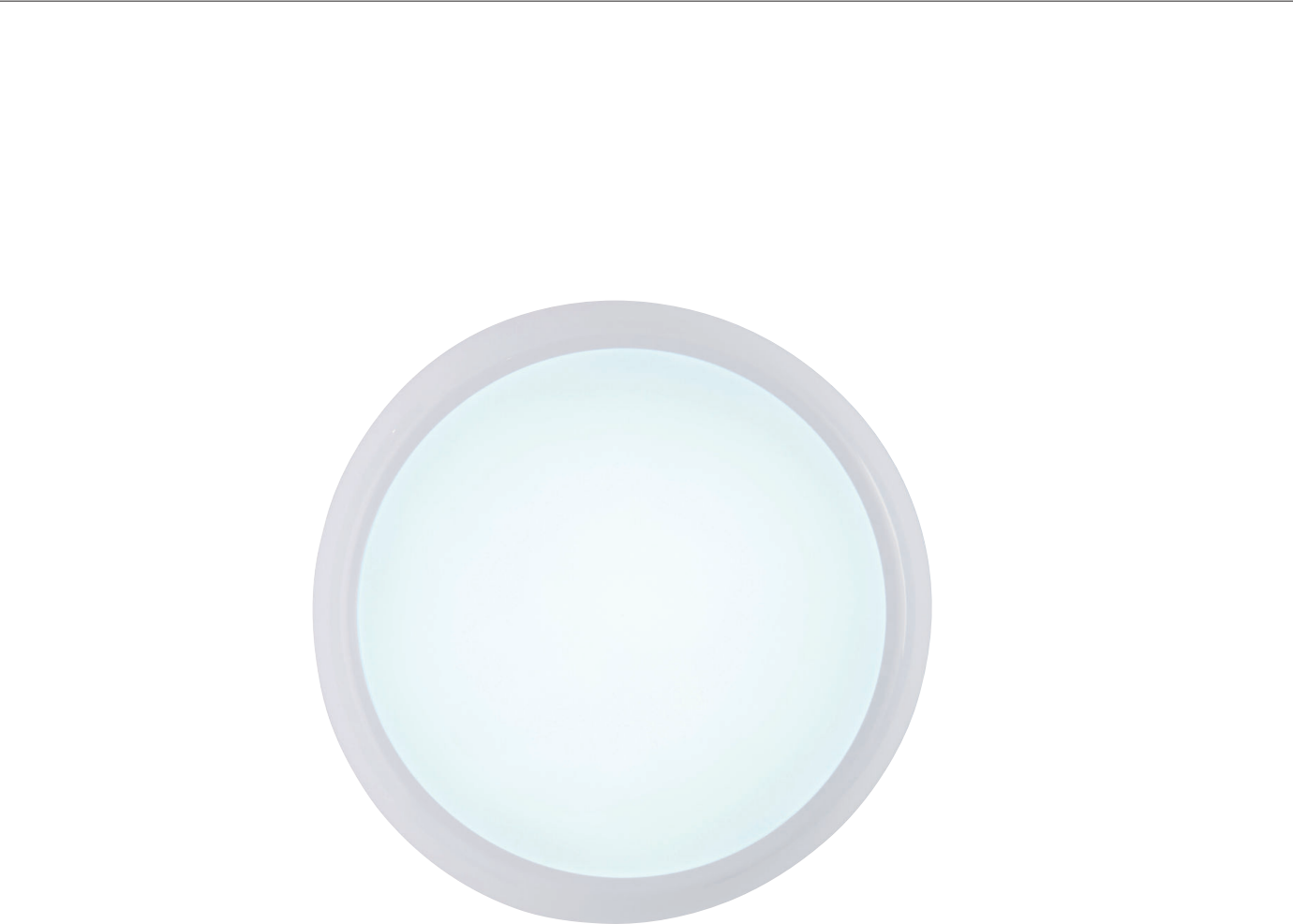
V5 15/12/2022
UK Manufacturer: BH17 7BY
EU Manufacturer: Brilliant AG,
Brilliantstrasse 1, D-27442 Gnarrenburg

saxby
lighting

Instruction manual

HeroPro CCT Microwave Emergency

95542, 103937, 103940



www.saxbylighting.com

saxby
lighting

Thank you for purchasing this light fitting. Please read the instructions carefully before use to ensure safe and satisfactory operation of this product. Please retain these instructions for future reference.

Warning

☐ This light fitting is double insulated and does not require connection to an earth circuit.

Please read these instructions carefully before commencing any work.

This unit must be fitted by a competent and qualified electrician.

Install in accordance with the IEE Wiring regulations and current Building Regulations.

Check the pack and make sure you have all the parts listed.

To prevent electrocution switch off at the mains supply before installing or maintaining this fitting. Ensure other persons cannot restore the electrical supply without your knowledge.

If you are in any doubt, please consult a qualified electrician.

This light fitting should be connected to a circuit with a 30mA RCD fitted.

If replacing an existing fitting, make a careful note of the connections.

Waste electrical products should not be disposed of with household waste. Please recycle where facilities exist. Check with your local authority or retailer for recycling advice.

Layout

Plan the desired layout of these fittings carefully, ensuring the cables will reach the distances between each light fitting.

Avoid locating any cables in positions that would cause a hazard. Position cables and junction boxes (not supplied) away from areas where they may be at risk from being cut, trapped or damaged.

The mains supply cable must have a minimum cross section area of 1.0mm².

Cables must be protected using suitable conduit or plastic trunking.

The products can be wall or ceiling mounted. If wall mounting ensure that the power supply is at the bottom.

Installation

Existing fittings must be completely removed before installation of a new product. Before removing the existing fitting, **carefully note the position of each set of wires.**

Note the switch is turned off before installation.


The ceiling surface must be flat and smooth to ensure a good fit.

Ensure that the screws and cable entry points are sealed to maintain the IP rating of the product.

- Twist and remove the lamp cover from the product, keep safe for refitting later.
- Turn the clip to loose the LED tray in the rear casing.
- Using the rear casing as a template mark the position to drill out the fixing holes. Take care to avoid damaging any concealed wiring and pipes.
- Fix the rear casing into the position using the installation plugs and screws.
- Pull the cable through the cable entry hole and seal to maintain the IP rating and wire as detailed Wiring Diagram.



The wattage is changeable between the diffrent wattage using the wattage switch on the driver before installation.

 For the 103937 is the 12W/9W/6W selectable

 For the 95542 is the 18W/14W/9W selectable

 For the 103940 is the 28W/24W/20W selectable

The colour is changeable between 3000/4000/6000K using the CCT switch on the driver before installation.



Choose your preferred wattage and colour before installing by wattage switch or CCT switch on the driver.
Note: Befoeore you change the wattage or colour, please turn off the power switch for safety.

Technical data

Supply Voltage: 220-240 V~, 50 Hz
Bulb Type: 95542----18/14/9W LED module (SMD) CCT, 3000/4000/6000K
103937---12/9/6W LED module (SMD) CCT, 3000/4000/6000K
103940---28/24/20W LED module (SMD) CCT, 3000/4000/6000K

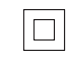
This product contains a light source of energy efficiency class **D**.

 Non-replaceable light source


 Replaceable control gear by a professional

 Conformity with all relevant UKCA Directive requirements.

 Conformity with all relevant EC Directive requirements.


 The power supply is Double Insulated and does not require connection to an Earth circuit.

 Waste electrical products should not be disposed of with household waste. Please recycle where facilities exist. Check with your Local Authority or local store for recycling advice.

 This product is not suitable for dimming.

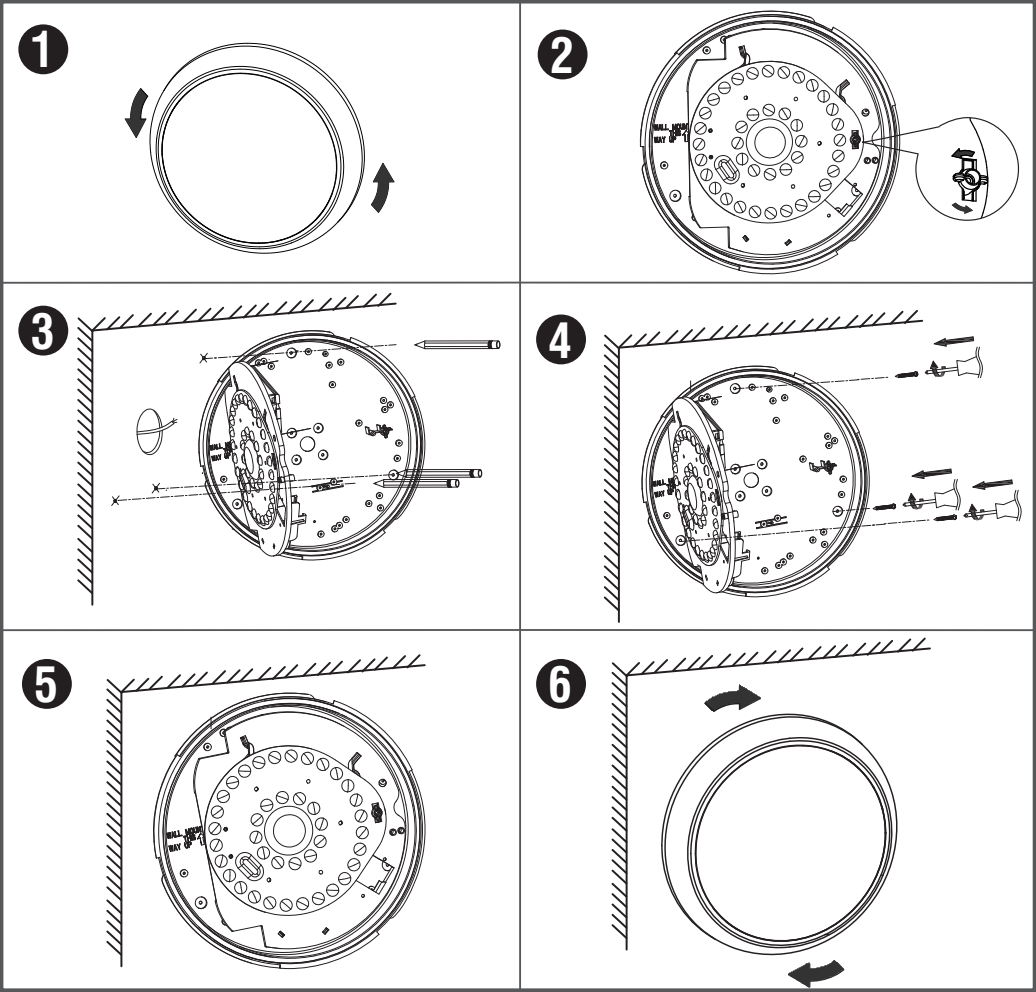
 This product is rated at IP65

 This product is rated at IK10 for 95542, 103937.

 This product is rated at IK08 for 103940.

Battery parameters:	
Lumens	120Lm in EM mode
Duration	3 hours (180 Minutes)
Operating Temperature	0°C - 50°C
Maximum Operating Humdity	90%
Change over time	Approximately 1s
Battery Specification	LifePO4 3.2V 1500mAh
Battery Charge Time	24 Hours
Battery warranty	2 years

- Unscrewed the battery box cover and then connect the battery DC connector together before commissioning.
- Refit the LED tray back into the rear casing and lock the clip.
- Twist the lamp cover back onto the product and lock in place.
- Replace fuse or circuit breaker and switch on. Your light is now ready for use.



* Product images may vary.

Bezels for 95542 only

The following individual casings are available for purchase separately.

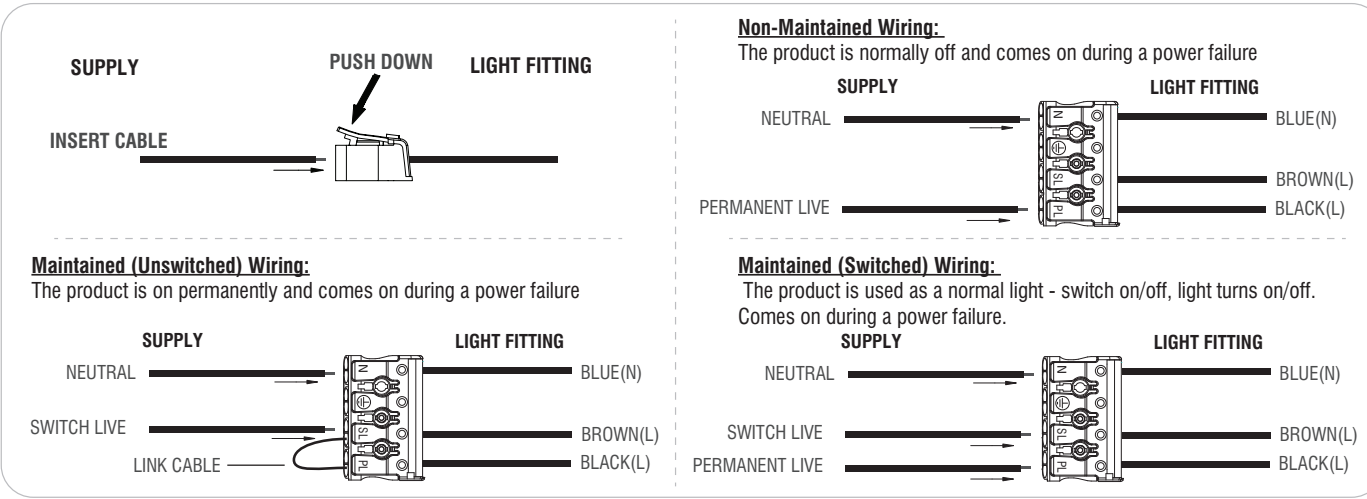
95545 : Chrome plain
95548 : Black plain
95551 : Anthracite grey plain

95546 : White eyelid
95549 : Black eyelid
95552 : Anthracite grey eyelid

95547 : White grill
95550 : Black grill
95553 : Anthracite grey grill

Wiring

- This product is double insulated and must not be earthed. If there are any incoming earth cables, they must be joined together and well insulated with good quality insulation tape. This is to ensure earth continuity throughout your property.
- Having correctly identified the wiring from your existing light fitting, connect to the quick fit connection block in the following way, using the supplied link cables where necessary.



Check that...

- You have correctly identified the wires.
- No loose strands have been left out of the connection block
- The connections are tight.